



Revista de
Historia Económica
*Journal of Iberian and Latin American
Economic History*

vol. 34 • Issue 1 • March 2016

STEPHEN BROADBERRY AND LEIGH GARDNER

Economic Development in Africa and Europe: Reciprocal Comparisons

SARA TORREGROSA-HETLAND

Sticky Income Inequality in the Spanish Transition (1973-1990)

LETICIA ARROYO ABAD

The Limits of the Estado Docente: Education and Political Participation in Peru, 1876-1940

FRANCISCO J. BELTRÁN TAPIA

Common Lands and Economic Development in Spain

**LUIS PERDICES DE BLAS AND JOSÉ LUIS RAMOS
GOROSTIZA**

Rediscovering America: Political Economy of Spanish Colonies According to the Explorers Juan-Ulloa, Malaspina and Humboldt

Published by

CAMBRIDGE
UNIVERSITY PRESS



Revista de Historia Económica

Journal of Iberian and Latin American Economic History

EDITORS / DIRECTORES

Sandra Kuntz Ficker, El Colegio de México, México

Blanca Sánchez Alonso (Chief Editor),

Universidad CEU-San Pablo, Madrid, Spain

William Summerhill, UCLA, USA

EDITORIAL BOARD / CONSEJO EDITORIAL

Carlos Álvarez Nogal, Universidad Carlos III de Madrid, Spain

Renato P. Colistete, Universidade de São Paulo, Brasil

Antonio Cubel, Universidad de Valencia, Spain

José G. Díaz Bahamonde, Pontificia Universidad Católica de Chile, Chile

Rafael Dobado, Universidad Complutense, Madrid, Spain

Mauricio Drelichman, University of British Columbia, Canada

Stanley Engerman, Rochester University, USA

Rui Pedro Esteves, Oxford University, UK

Pablo Gerchunoff, Universidad Torcuato di Tella, Argentina

Regina Grafe, European University Institute, Italy

Alfonso Herranz, Universitat de Barcelona, Spain

Alejandra Irigoín, London School of Economics, UK

Herbert S. Klein, Stanford University, USA

Pedro Lains, Instituto de Ciências Sociais, Lisboa, Portugal

Carlos Marichal, El Colegio de México, México

Graciela Márquez, El Colegio de México, México

Aldo Musacchio, Brandeis International Business School, USA

David Reher, Universidad Complutense, Madrid, Spain

James Robinson, Harvard University, USA

Joan Ramón Rosés, London School of Economics and Political Science, UK

Jeffrey G. Williamson, Harvard University, USA

BOARD OF TRUSTEES / PATRONATO

Luis Bértola, Universidad de la República, Uruguay

Juan Carmona, Universidad Carlos III de Madrid, Spain

Sebastián Coll, Universidad de Cantabria, Spain

Alan Dye, Barnard College, Columbia University, USA

Pablo Martín Aceña, Universidad de Alcalá, Spain

Adolfo Meisel Roca, Banco de la República de Colombia

Benigno Pendás, Centro de Estudios Políticos y Constitucionales, Spain

Antonio Tena, Universidad Carlos III de Madrid, Spain

RHE-JILAEH is published by Cambridge University Press for the Instituto Figuerola de Historia y Ciencias Sociales, Universidad Carlos III de Madrid

SUBSCRIPTIONS

RHE-JILAEH (ISSN 0212-6109) is published three times a year in March, September and December. The three parts form one annual volume. The 2016 subscription price for volume 34, which includes print and electronic access, is £169.00 (US \$274.00 in USA, Canada and Mexico, €203.00 in Euro-zone Europe). The electronic-only price available to institutions is £135.00 (US \$224.00 in USA, Canada and Mexico, €166.00 in Euro-zone Europe). Individuals may purchase a print-only subscription at the reduced rate of £46.00 (US \$76.00 in USA, Canada and Mexico, €55.00 in Euro-zone Europe), ordering directly from the publisher and certifying that the journal is for their personal use. Single parts are priced at £65.00 (US \$105.00 in USA, Canada and Mexico, €78.00 in Euro-zone Europe) plus postage.

All prices include delivery, by air if appropriate, and exclude VAT. EU subscribers (outside the UK) who are not registered for VAT should add VAT at their country's rate. VAT registered members should provide their VAT registration number. Japanese prices for institutions (including ASP delivery) are available from Kinokuniya Company Ltd, P.O. Box 55, Chitose, Tokyo 156, Japan.

Orders, which must be accompanied by payment, may be sent to a bookseller, subscription agent or direct to the publisher: Cambridge University Press, Journals Fulfillment Department, UPH, Cambridge CB2 8BS; or in the USA, Canada and Mexico: Cambridge University Press, Journals Fulfillment Department, 32 Avenue of the Americas, New York, NY 10013, USA. Periodicals postage paid at New York, NY and at additional mailing offices.

COPYING

This journal is registered with the Copyright Clearance Center, 222 Rosewood Drive, Danvers, MA 01923, USA. Organizations in the USA who are also registered with the C.C.C. may, therefore copy material (beyond the limits permitted by sections 107 and 108 of U.S. Copyright law) subject to payment to the C.C.C. of the per copy fee of \$15.00. This consent does not extend to a multiple copying for promotional or commercial purposes. Code 0212-6109/16. ISI Tear Sheet Service, 3501 Market Street, Philadelphia, PA 19104, USA, is authorized to supply single copies of separate articles for private use only. Organizations authorized by the Copyright Licensing Agency may also copy, material subject to the usual conditions. For all other use, permission should be sought from Cambridge or from the American Branch of Cambridge University Press.

RHE-JILAEH is included in the Cambridge Journals Online journals service which can be found at

<http://journals.cambridge.org/rhe>

©Instituto Figuerola de Historia y Ciencias Sociales, Universidad Carlos III de Madrid, 2016

ISSN 0212-6109 E-ISSN 2041-3335

This journal issue has been printed on FSC-certified paper and cover board. FSC is an independent, non-governmental, not-for-profit organization established to promote the responsible management of the world's forests. Please see www.fsc.org for information.

Printed in the United Kingdom at Bell & Bain Ltd, Glasgow

CONTENTS / SUMARIO

- 3 Editorial Note / Nota de los Editores
- 11 Stephen Broadberry and Leigh Gardner
Economic Development in Africa and Europe: Reciprocal Comparisons
- 39 Sara Torregrosa-Hetland
Sticky Income Inequality in the Spanish Transition (1973-1990)
- 81 Leticia Arroyo Abad
The Limits of the Estado Docente: Education and Political Participation in Peru, 1876-1940
- 111 Francisco J. Beltrán Tapia
Common Lands and Economic Development in Spain
- 135 Luis Perdiges de Blas and José Luis Ramos-Gorostiza
Rediscovering America: Political Economy of Spanish Colonies According to the Explorers Juan-Ulloa, Malaspina and Humboldt

EDITORIAL NOTE

As usual at the beginning of 2015 we publish our traditional editorial note. We present basic statistics and recent news concerning the evolution of the Journal in the past year.

The RHE-JILAEH received 57, 44, 43, 54 66 and 59 original research papers in the years from 2010 to 2015 respectively. There has been a slight fall in the number of originals received in the last year. Figure 1 presents the evolution in these figures since 2010.

The percentage of original manuscripts received last year dealing with Latin American history remains high, while there is a rising pattern for articles dealing with Global History (over 35%). The numbers of original research papers on Spanish and Portuguese history received remained stable.

Our rejection rate of manuscripts not suitable for RHE-JILAEH, either by its subject or by other problems, maintains high values (64%). As already noted in the previous year the Journal profile seems well established since researchers seem to perceive more clearly the kind of manuscripts suitable for the readers of RHE-JILAEH.

Evaluation and processing times for articles have remained at very reasonable values and our objective is to continue in this line. In the last year there has been an increase in the number of accepted articles in First View.

The greatest wealth of the Journal, jointly with the Editorial Board, is the contribution of the reviewers of the received manuscripts. The list of reviewers reflects the international dimension of the RHE-JILAEH as well as the generosity and professionalism of the scientific community. We gratefully acknowledge their contribution to the Journal.

FIGURE 1
NUMBER OF ORIGINAL ARTICLES SUBMITTED TO RHE-JILAEH, 2010-2015.

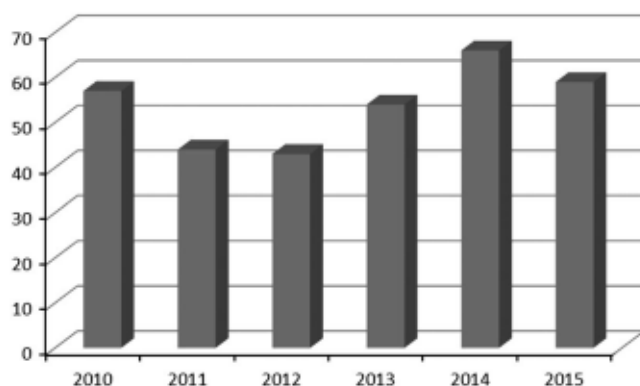


TABLE 1
GEOGRAPHICAL DISTRIBUTION AND TOPICS OF ARTICLES IN 2015

Regional Distribution	
Global history	35%
Latin American	37%
Iberian Peninsula	28%
	100%
Topics	
Agriculture, farming and fishing	8%
Economic growth and development	12%
Demography, population and education	5%
Public finance, monetary and financial history	22%
Business history	17%
Methodology, historiography and sources	8%
Mining, industry, energy and construction	0%
Miscellaneous	7%
History of economic thought	8%
Prices, wages, income and profit	3%
Foreign sector	8%
Transport, communication and domestic trade	2%
	100%

REJECTION RATE

Articles rejected (total)	53%
Articles rejected (received during 2015)	64%

FIGURE 2
REGIONAL DISTRIBUTION OF TOPICS. TOTAL SUBMISSIONS IN 2015 (%).

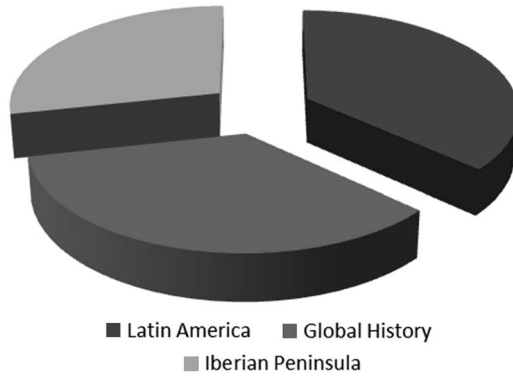


TABLE 2
STATISTICS FOR EVALUATIONS PERIODS AND THE SITUATIONS OF ORIGINAL RESEARCH PAPERS DURING 2015

Length of evaluation process	2015		2015	
	Total articles		Articles submitted in 2015	
Under 3 months	40	51%	38	64%
Between 3 and 4 months	3	4%	1	2%
Over 4 months	26	33%	10	17%
Under evaluation	10	13%	10	17%
Total	79	100%	59	100%
Results	2015		2015	
	Total Articles		Articles submitted in 2015	
Accepted	27	34%	11	19%
Peer Rejection	7	9%	4	7%
In process	3	4%	3	5%
Under Evaluation	7	9%	7	12%
Editor's rejection	35	44%	34	58%
Total	79	100%	59	100%

NOTA DE LOS EDITORES

Como es habitual, en el primer número del año publicamos la tradicional nota de los editores que presenta los datos y novedades más recientes de la evolución de la Revista en el año anterior.

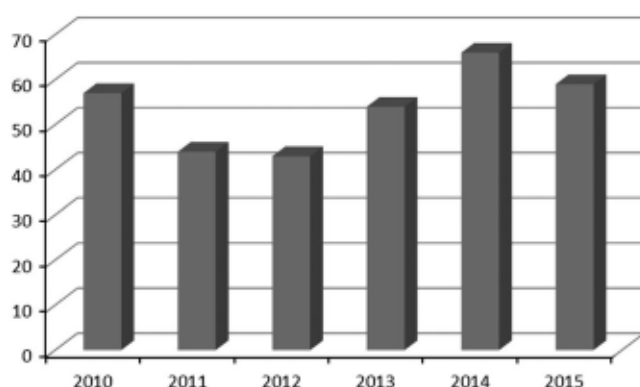
La recepción de originales de investigación recibidos por RHE-JILAEH entre los años 2010 y 2015 ha sido de 57, 44, 43, 54, 66 y 59 respectivamente con una ligera bajada en el número de originales en el último año. El gráfico 1 presenta la evolución desde el año 2010.

Por lo que se refiere a la distribución geográfica de los temas de los artículos recibidos, el porcentaje de manuscritos recibidos sobre temas de historia de América Latina se mantiene elevado mientras se consolida la tendencia al alza de los artículos con temas de historia global con un porcentaje del 35 por ciento. Los manuscritos originales sobre temas de historia económica de España y Portugal mantienen un porcentaje estable.

La tasa de rechazo editorial de manuscritos no apropiados para RHE-JILAEH, bien por su temática bien por problemas de otra índole, se mantiene en valores elevados (64%). Como ya observamos el año anterior el perfil de la Revista se consolida en tanto que los investigadores parecen percibir de manera más clara el tipo de manuscritos más idóneos para los lectores a los que se dirige la RHE-JILAEH.

Los tiempos de evaluación y tramitación de artículos han permanecido en valores muy razonables e intentaremos que así siga. En el último año ha habido un aumento en el número de artículos aceptados disponibles en First View.

GRÁFICO 1
NÚMERO DE ARTÍCULOS ORIGINALES ENVIADOS A RHE-JILAEH, 2010-2015.



La mayor riqueza de la Revista, además de su Consejo Editorial, es la contribución de los evaluadores de los manuscritos recibidos. El plantel de evaluadores refleja la dimensión internacional de la RHE-JILAEH así como la generosidad y profesionalidad de la comunidad científica. Agradecemos a todos ellos su colaboración con la Revista durante el año 2015.

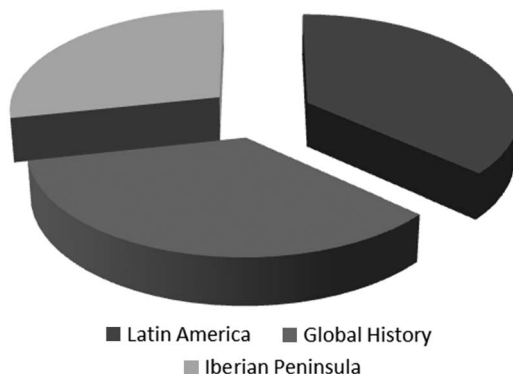
CUADRO 1
DISTRIBUCIÓN Y TEMAS DE LOS ARTÍCULOS EN 2015

Distribución Regional	
Historia Global	35%
Historia Latinoamericana	37%
Historia de la Península Ibérica	28%
	100
Distribución Temas	
Agricultura, ganadería y pesca	8%
Crecimiento y desarrollo económico	12%
Demografía, población y educación	5%
Hacienda Pública; historia monetaria y financiera	22%
Historia Empresarial	17%
Metodología, historiografía y fuentes	8%
Minería, industria, energía y construcción	0%
Miscelánea	7%
Historia del pensamiento Económico	8%
Precios, salarios, rentas y beneficios.	3%
Sector Exterior	8%
Transportes, comunicaciones y comercio interior	2%
	100

IMPACTO

Rechazos artículos activos	53%
Rechazos artículos recibidos año 2015	64%

GRÁFICO 2
DISTRIBUCIÓN REGIONAL DE TEMAS. TOTAL RECIBIDOS EN 2015 (%).



CUADRO 2
ESTADÍSTICAS DE LOS TIEMPOS DEL PROCESO DE EVALUACIÓN DURANTE EL AÑO 2015

Duración del proceso de evaluación	2015		2015	
	Artículos activos		Artículos recibidos en 2015	
Menos de 3 meses	40	51%	38	64%
Entre 3 y 4 meses	3	4%	1	2%
Más de 4 meses	26	33%	10	17%
En evaluación	10	13%	10	17%
Total	79	100	59	100
Resultados	2015		2015	
	Artículos activos		Artículos recibidos en 2015	
Aceptados	27	34%	11	19%
Rechazados	7	9%	4	7%
En revision	3	4%	3	5%
En evaluacion	7	9%	7	12%
Rechazos editoriales	35	44%	34	58%
Total	79	100	59	100

ACKNOWLEDGEMENT TO REFEREES IN 2015
 RECONOCIMIENTO A EVALUADORES EN 2015

Araceli	Almaraz	El Colegio de la Frontera Norte, México
José U.	Bernardos Sanz	UNED
María	Blanco	Universidad Ceu-San Pablo, Madrid
Jutta	Bolt	University of Groningen
Alex	Borucki	University of California Irvine
Justin	Buciferro	Eastern Washington University
Maria	Camou	Universidad de la República de Uruguay
Marcello	Carmagnani	Fondazione Luigi Einaudi
Juan	Carmona	Universidad Carlos III de Madrid
Hilario	Casado Alonso	Universidad de Valladolid
Pedro	Cavalcanti Ferreira	Fundação Getulio Vargas, EPGE
Fabio	Cerina	Univerisità di Cagliari
Amilcar	Challú	Bowling Green State University
Latika	Chaudhary	Naval Postgraduate School, USA
David	Chilosi	London School of Economics
Carlo	Ciccarelli	Univerisità di Roma Tor Vergata
Antonio	Cubel	Universitat de València
Carlos J.	de Carlos Morales	Universidad Autónoma de Madrid
Gustavo A.	del Angel	CIDE (México)
José	Díaz Bahamonde	Pontificia Universidad Católica de Chile
Rafael	Dobado González	Universidad Complutense
Mauricio	Drelichman	University of British Columbia, Canada
Jari	Eloranta	Appalachian State University
Emanuele	Felice	Universitat Autònoma de Barcelona
Stefano	Fenoaltea	Univerisità di Torino
Paloma	Fernández Pérez	Universitat de Barcelona
Juan	Flores Zendejas	University of Geneva
Johan	Fourie	Stellenbosch University
Ewout	Frankema	Wageningen University
Pedro	Funari	USP-Universidade de São Paulo
José L.	Gasch-Tomás	Instituto de Historia. CSIC.
Francisco	Goerlich	Universitat de València
Aurora	Gómez-Galvarriato	El Colegio de México
Erik	Green	Lund University
Timothy J.	Hatton	University of Essex
Alfonso	Herranz Loncan	Universitat de Barcelona
Inés	Herrera Canales	Instituto Nacional de Antropología e Historia de México
Philip T.	Hoffman	California Institute of Technology
Roy	Hora	Universidad de San Andrés
Juan	Infante-Amate	Universidad Pablo de Olavide, Sevilla
Herbert S.	Klein	Stanford University and Hoover Institution

Ramón	Lanza	Universidad Autónoma de Madrid
Carlos	Marichal	El Colegio de México
Stephen	McKnight	El Colegio de México
Branko	Milanovic	City University of New York
Juan Carlos	Moreno-Brid	Universidad Nacional Autónoma de México
Zacarias	Moutoukias	Universidad Paris-Diderot
Carlos	Newland	ESEADE, Buenos Aires
Pilar	Nogues Marco	University of Geneva
Sevket	Pamuk	Bosphorus University
Manuel	Pérez García	Renmin University of China
Mª Ángeles	Pons Brías	Universitat de València
Leandro	Prados de la Escosura	Universidad Carlos III de Madrid
Enriqueta	Quiroz Muñoz	Instituto Mora, México
Fernando	Ramos Palencia	Universidad Pablo de Olavide, Sevilla
Armando	Razo	Indiana University
Ian O.	Read	Soka University
David S.	Reher	Universidad Complutense
George	Reid Andrews	University of Pittsburgh
Fernando	Rocchi	Universidad Torcuato Di Tella
Carlos	Rodríguez Braun	Universidad Complutense
Mª Eugenia	Romero	Universidad Nacional Autónoma de México
Joan R.	Roses	London School of Economics
Ignacio	Sánchez-Cuenca	Universidad Carlos III de Madrid
Javier	San-Julián Arrupe	Universitat de Barcelona
Carlos	Santiago Caballero	Universidad Carlos III de Madrid
Daniel	Santilli	Universidad de Buenos Aires
Alberto	Sanz Gimeno	Universidad Complutense
Roberto	Schmit	Universidad Nacional de General Sarmiento
Anand	Swamy	Williams College
Jesús Mª	Valdaliso Gago	Universidad del País Vasco
Aurelia	Valiño Castro	Universidad Complutense
Catalina	Vizcarra	University of Vermont