

## Universality of cauliflower-like fronts: from nanoscale thin films to macroscopic plants

This article has been downloaded from IOPscience. Please scroll down to see the full text article.

2012 New J. Phys. 14 103039

(<http://iopscience.iop.org/1367-2630/14/10/103039>)

View [the table of contents for this issue](#), or go to the [journal homepage](#) for more

Download details:

IP Address: 163.117.159.141

The article was downloaded on 17/12/2012 at 14:56

Please note that [terms and conditions apply](#).

## Universality of cauliflower-like fronts: from nanoscale thin films to macroscopic plants

Mario Castro<sup>1,6</sup>, Rodolfo Cuerno<sup>2</sup>, Matteo Nicoli<sup>3</sup>, Luis Vázquez<sup>4</sup>  
and Josephus G Buijnsters<sup>5</sup>

<sup>1</sup> Grupo de Dinámica No-Lineal and Grupo Interdisciplinar de Sistemas Complejos (GISC), Escuela Técnica Superior de Ingeniería (ICAI), Universidad Pontificia Comillas, E-28015 Madrid, Spain

<sup>2</sup> Departamento de Matemáticas and GISC, Universidad Carlos III de Madrid, E-28911 Leganés, Spain

<sup>3</sup> Physique de la Matière Condensée, École Polytechnique—CNRS, F-91128 Palaiseau, France

<sup>4</sup> Instituto de Ciencia de Materiales de Madrid, CSIC, Cantoblanco, E-28049 Madrid, Spain

<sup>5</sup> Department of Metallurgy and Materials Engineering, Katholieke Universiteit Leuven, B-3001 Leuven, Belgium  
E-mail: [marioc@upcomillas.es](mailto:marioc@upcomillas.es)

*New Journal of Physics* **14** (2012) 103039 (15pp)

Received 14 May 2012

Published 23 October 2012

Online at <http://www.njp.org/>

doi:10.1088/1367-2630/14/10/103039

**Abstract.** Chemical vapor deposition (CVD) is a widely used technique to grow solid materials with accurate control of layer thickness and composition. Under mass-transport-limited conditions, the surface of thin films thus produced grows in an unstable fashion, developing a typical motif that resembles the familiar surface of a cauliflower plant. Through experiments on CVD production of amorphous hydrogenated carbon films leading to cauliflower-like fronts, we provide a quantitative assessment of a continuum description of CVD interface growth. As a result, we identify non-locality, non-conservation and randomness as the main general mechanisms controlling the formation of these ubiquitous shapes. We also show that the surfaces of actual cauliflower plants and combustion fronts obey the same scaling laws, proving the validity of the theory

<sup>6</sup> Author to whom any correspondence should be addressed.



Content from this work may be used under the terms of the [Creative Commons Attribution-NonCommercial-ShareAlike 3.0 licence](https://creativecommons.org/licenses/by-nc-sa/3.0/). Any further distribution of this work must maintain attribution to the author(s) and the title of the work, journal citation and DOI.

over seven orders of magnitude in length scales. Thus, a theoretical justification is provided, which had remained elusive so far, for the remarkable similarity between the textures of surfaces found for systems that differ widely in physical nature and typical scales.

## Contents

<b>1. Introduction</b>	<b>2</b>
<b>2. The model</b>	<b>3</b>
<b>3. Comparison with experiments</b>	<b>4</b>
<b>4. Universality of cauliflower-like fronts</b>	<b>10</b>
<b>5. Conclusions</b>	<b>12</b>
<b>Acknowledgments</b>	<b>14</b>
<b>References</b>	<b>14</b>

## 1. Introduction

Chemical vapor deposition (CVD) is a technique that is extensively used to grow films whose surfaces have controlled smoothness or composition [1]. Part of the generalized use of CVD to produce coatings or thin films is due to the fact that it can be used with almost all elements and with many compounds. Basically, CVD involves the film growth of a solid out from the aggregation of species that appear as a result of the reaction or decomposition of volatile precursors within a chamber. Chemical reactions occur in the vicinity of or at the surface of the solid, by-products being removed when needed. Here, we are interested in CVD as a technique that is capable of growing a surface under far from equilibrium conditions, yielding unstable rough surfaces that resemble the morphology of a familiar cauliflower plant [2]. We will refer to these surfaces as cauliflower-like fronts.

Interestingly, not only growing thin films display this appealing cauliflower texture, but also many other natural patterns do. In general, these shapes, although easily recognizable, are not regular but present some self-similar or hierarchical structure within a characteristic sea of randomness. In this sense, cauliflower-like fronts rank among the most fascinating natural forms, in view of their simplicity and considering their diversity in origins and scales: they can be observed across length scales that range from tens of nanometers (surfaces of amorphous thin films [2]) up to hundreds of microns (turbulent combustion fronts [3]) and tens of centimeters (the familiar cauliflower plants). However, these morphologies being originated under non-equilibrium conditions, there is a lack of a general theoretical framework that can account for such diversity and ubiquity.

Another feature that renders CVD attractive as a benchmark to understand surface growth far from equilibrium is the possibility to formulate a physically motivated theory for interface dynamics, which incorporates the essential mechanisms that drive the process when this production technique is employed [4]. However, to our knowledge, a detailed comparison between such theory and the mentioned (fractal) cauliflower-like fronts is still lacking. This is remarkable in view of the wide interest that fractal geometry [5] has attracted in the past, having been recognized to encode the morphological features of self-similar systems, namely those whose structure looks the same independent of the scale of observation. Actually,

many of the best-known fractals—such as, for instance, computational models of biological morphogenesis [6]—are geometrical structures constructed deterministically by iteration of a simple initial motif. However, this qualitative knowledge is not entirely satisfactory because, as mentioned, cauliflower-like structures are not exactly regular, but rather they appear to be random to the eye.

In this work, we provide a detailed comparison between experimental surfaces of thin amorphous hydrogenated carbon films grown by CVD and predictions from a physical model derived from first principles. Excellent agreement is obtained for both (qualitative) morphological and (quantitative) statistical analyses. This allows us to identify the main features of cauliflower-like fronts, as well as the essential general mechanisms that lead to their occurrence, thus accounting for their ubiquity in natural systems across several orders of magnitude. These conclusions are reached after further morphological analysis of actual cauliflower plants and combustion fronts for which typical scales are macroscopic rather than submicrometric as in our CVD experiments. The interface evolution equation we consider is thus postulated as a universal description for non-local interface growth under appropriate conditions.

## 2. The model

In [7–9] a generic system of equations for CVD surface growth was presented. Those equations contain the main mechanisms involved in CVD growth: diffusion in the vapor phase, reaction and attachment via surface kinetics, generalizing the classic description of the process (see [4] and references therein) to account for fluctuation effects on aggregation events and diffusive fluxes. Performing standard linear and weakly nonlinear analyses, one arrives at a closed equation for the height of the film surface,  $h(\mathbf{r}, t)$ , at time  $t$ , where  $\mathbf{r}$  is the position above a reference plane. Actually, the equation is more easily expressed for the space Fourier transform of the surface,  $h_{\mathbf{q}}(t) \equiv \mathcal{F}[h(\mathbf{x}, t)]$  and, using  $q = |\mathbf{q}|$ , reads

$$\partial_t h_{\mathbf{q}} = (Vq - Dd_0q^3) h_{\mathbf{q}} + \frac{V}{2} \mathcal{F}\{(\nabla h)^2\}_{\mathbf{q}} + \eta_{\mathbf{q}}. \quad (1)$$

Here<sup>7</sup>,  $V$  is the average velocity of the interface,  $D$  is the diffusion coefficient in the vapor phase,  $d_0$  is the capillarity length of the surface and the Gaussian white noise term  $\eta_{\mathbf{q}}$  contains information about the underlying microscopic fluctuations [7–9], having zero mean and correlations given by

$$\langle \eta_{\mathbf{q}}(t) \eta_{\mathbf{q}'}(t') \rangle = D_n (2\pi)^2 \delta(\mathbf{q} + \mathbf{q}') \delta(t - t'). \quad (2)$$

Despite the apparent simplicity of equation (1), emphasis must be put on its real space representation in order to stress its non-local character. Thus, the terms proportional to odd powers of  $q$  correspond to fractional Laplacians acting on the height field,

$$(-\nabla^2)^{(2p-1)/2} h(\mathbf{r}) = c_{2,2p-1} \text{PV} \int_{\mathbb{R}^2} \frac{h(\mathbf{r}) - h(\mathbf{r}')}{|\mathbf{r} - \mathbf{r}'|^{2p+1}} d\mathbf{r}', \quad p = 1, 2, \quad (3)$$

where PV denotes the Cauchy principal value and  $c_{2,2p-1}$  are appropriate numerical constants [10–12]. Indeed, the Fourier representation of (3) is given by

$$\mathcal{F}[(-\nabla^2)^{(2p-1)/2} h] = q^{2p-1} h_{\mathbf{q}}, \quad p = 1, 2, \quad (4)$$

<sup>7</sup> See table 2 for a glossary and summary of the main variables and parameters used in this work.

as occurring in equation (1). Thus, in real space these terms couple height differences with algebraically decaying kernels. Hence, the value of the local growth velocity at a given surface point depends on the values of the height at all other surface points. Physically, this non-local coupling arises from the competition of the different parts of the system over the resources for growth [14]. In the case of a solid surface growing out of species that aggregate from a vapor phase, it is induced by the geometrical shadowing of prominent surface features that are more exposed to diffusive fluxes, over more shallow ones [4]<sup>8</sup>.

### 3. Comparison with experiments

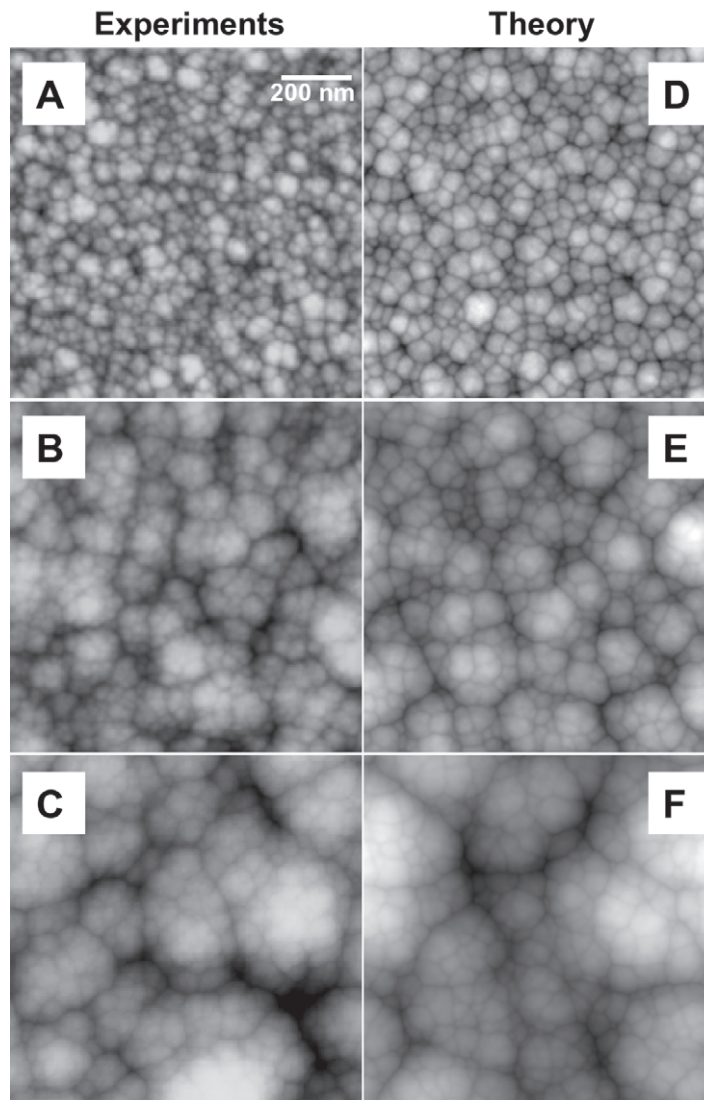
In order to understand the physical implications of equation (1), we resort to numerical simulations that circumvent the analytical difficulties posed by its nonlinearity. Moreover, we have performed growth experiments in order to show that this equation indeed describes *quantitatively* actual cauliflower-like morphologies in CVD. Specifically, amorphous hydrogenated carbon (a-C:H) films were grown by electron cyclotron resonance chemical vapor deposition (ECR-CVD) on silicon substrates in a commercial ECR reactor (ASTeX, AX4500) in a two-zone vacuum chamber operating with a 2.45 GHz microwave source at 208–210 W input power. Gas mixtures of methane/argon (15/35 sccm) were applied keeping the operating pressure at  $1.1 \times 10^{-2}$  Torr. A dc bias of  $-50$  V was applied to the silicon substrates. All samples were grown under these conditions and only the deposition time was varied. The film surface morphology was characterized *ex situ* by atomic force microscopy (AFM) with Nanoscope IIIa equipment (Veeco) operating in tapping mode with silicon cantilevers with a nominal tip radius of 8 nm.

Top views of the surface morphology are shown in figure 1, panels (A)–(C). As we can see, a ‘globular’ structure appears at short times with a characteristic length scale that grows in a disorderly fashion with further deposition. In our ECR-CVD growth system, the main growth species are ions and radicals. The latter can be distinguished into two main groups, i.e.  $C_1H_x$  and  $C_2H_x$  radicals. Within the first subgroup,  $C_1H_{2,3}$  radicals have values of the sticking probability  $s$  to become permanently attached to the surface of about  $s \simeq 10^{-4}$ – $10^{-2}$ , whereas  $C_1H$  and  $C_1$  have a sticking coefficient close to unity [15]. The  $C_2H_x$  radicals generally have a high sticking coefficient ( $s \simeq 0.4$ – $0.8$ ) [16]. In fact, for a pure methane plasma, an overall sticking coefficient  $s = 0.65 \pm 0.15$  has been estimated [17]. Moreover, when methane is diluted with argon, the impingement of argon ions generates dangling bonds at the surface, leading to an effective increase of  $s$  for different growth species. Thus, we can assume that the effective sticking coefficient is close to unity in our system,  $s \simeq 1$  [18]. This allows us to determine the surface kinetics regime at which experiments are operating. Assessment is done through a comparison of the two velocity scales in the system: the mean surface velocity,  $V$ , and the mass transfer rate,  $k_D$ , that is related to the sticking probability  $s$  through

$$k_D = DL_{\text{mfp}}^{-1} \frac{s}{2-s}, \quad (5)$$

with  $L_{\text{mfp}}$  being the mean free path of molecules in the vapor phase (see [19] and references therein). From the data in table 1 and equation (5), we can estimate  $k_D \simeq 0.75 \text{ cm s}^{-1}$ , which is considerably higher than  $V = 2.4 \times 10^{-8} \text{ cm s}^{-1}$ . Hence, the system can be assumed to be in the fast kinetics regime for which equation (1) is expected to hold [7–9].

<sup>8</sup> Similarly, for the combustion of premixed flames, the competition is for the available unburnt fuel [13].



**Figure 1.** Nanocauliflower surface growth. AFM top views ( $1 \times 1 \mu\text{m}^2$ ) of CVD experiments at times  $t = 40$  min (A),  $t = 2$  h (B) and  $t = 6$  h (C). Panels (D)–(F) show numerical results from equation (1) for the same times.

In spite of the previous assessment of parameter values, still many microscopic details of the experimental setup cannot be measured or even estimated from data, mainly due to the limited resolution of the experimental measurements and also due to the coexistence of species both in the vapor phase and at the very same aggregate surface: to cite a few, the mean atomic volume of aggregating species at the surface, surface tension, or the capillarity length. Unfortunately, some of these are crucial in order to determine the quantitative values of the coefficients in equation (1).

Hence, in order to proceed further we must extract additional parameter values from analysis of the morphologies in figures 1(A)–(C). First, we render equation (1) non-dimensional by fixing appropriate time, length and height scales; namely, we perform the following change of variables:  $x \rightarrow x' \equiv x/x_0$  (so  $q \rightarrow q' \equiv x_0 q$ ,  $t \rightarrow t' \equiv t/t_0$ ,  $h \rightarrow h' \equiv h/h_0$ , so that

**Table 1.** Summary of parameters that can be measured or estimated from our CVD growth experiments.

Observable	Value
Growth velocity ( $V$ )	$2.4 \pm 0.12 \times 10^{-8} \text{ cm s}^{-1}$ ( $864 \pm 43 \text{ nm h}^{-1}$ )
Mean substrate temperature ( $T$ )	343 K
Mean free path ( $L_{\text{mfp}}$ )	$0.45 \pm 0.05 \text{ cm}$
Partial pressure (methane)	$3.75 \pm 0.25 \times 10^{-3} \text{ mbar}$
Diffusion coefficient ( $D$ )	$0.33 \pm 0.02 \text{ cm}^2 \text{ s}^{-1}$

**Table 2.** Summary of the acronyms and main variables used in this work.

Name	Meaning
CVD	Chemical vapor deposition
ECR-CVD	Electron cyclotron resonance CVD
$\mathcal{F}$	Fourier transform operator
$V$	Average interface growth velocity
$D$	Diffusion coefficients of particles in the gas
$d_0$	Capillarity length
$l_c$	Characteristic length scale in the linear regime
$D_n$	Amplitude of the noise fluctuations
$C_{2,3,4}$	Stabilizing coefficients in the general model (e.g. $C_3 = d_0 D$ )
$h(\mathbf{x}, t)$	Position (height) of the growing interface
$h_{\mathbf{q}}(t)$	Fourier transformation of $h(\mathbf{x}, t)$
$\eta(\mathbf{x}, t)$	Noise term accounting for fluctuations
$\eta_{\mathbf{q}}(t)$	Fourier transformation of $\eta(\mathbf{x}, t)$
PSD	Power spectral density (also $S(\mathbf{q}, t)$ )
$W(t)$	Global roughness or width of the interface (standard deviation of the height)
$\alpha$	Roughness exponent
$z$	Dynamic exponent
$\beta$	Growth exponent ( $\beta = \alpha/z$ )

equation (1) reads

$$\frac{h_0}{t_0} \partial_t h'_{\mathbf{q}'} = \left( \frac{h_0}{x_0} V q' - D d_0 \frac{h_0}{x_0^3} (q')^3 \right) h'_{\mathbf{q}'} + \frac{V h_0^2}{2 x_0^2} \mathcal{F}\{(\nabla' h')^2\}_{\mathbf{q}'} + (x_0^{-2} t_0^{-1})^{-1/2} \eta_{\mathbf{q}'}. \quad (6)$$

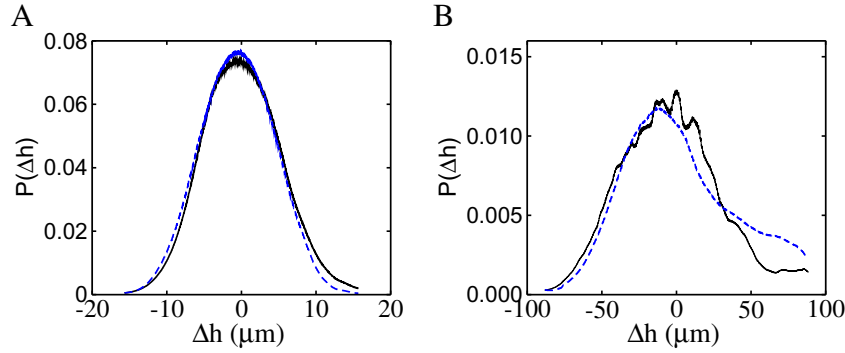
By properly choosing  $x_0$ ,  $t_0$  and  $h_0$  as

$$x_0 = h_0 = \sqrt{\frac{D d_0}{V}}, \quad t_0 = \sqrt{\frac{D d_0}{V^3}}, \quad (7)$$

we can reduce the latter equation to (after dropping the primes for convenience)

$$\partial_t h_{\mathbf{q}} = (q - q^3) h_{\mathbf{q}} + \frac{1}{2} \mathcal{F}\{(\nabla h)^2\}_{\mathbf{q}} + \left( \frac{t_0 D_n}{h_0^2 x_0^2} \right)^{1/2} \tilde{\eta}_{\mathbf{q}}, \quad (8)$$





**Figure 2.** Normalized distribution of heights,  $P(\Delta h)$ , for (A) figures 1(A) (black solid line) and 1(D) (blue dashed line) corresponding to  $t = 40$  min and (B) figures 1(C) (black solid line) and 1(F) (blue dashed line) for  $t = 6$  h.

where  $\tilde{\eta}_q$  is a white noise term with zero mean and variance 1. Note how all the information is now contained in the prefactor of the noise term, which is, after fixing the lateral size of the simulation domain (in our case  $L = 512$ , see the discussion below), the only free parameter remaining to be fitted. We have performed simulations for different values of  $D_n$  until we found the optimal value that provides the best agreement with experiments (in our case,  $t_0 D_n / h_0^2 x_0^2 = 0.21$ ).

Starting from a flat initial condition, at short times the surface slopes are small so that the quadratic nonlinear term in equation (1) is expected to be negligible. The system will thus evolve according to the linear terms, which has implications on the statistical properties of the morphology. For instance, the computed skewness of the height distribution in figure 1(A) is negligible (note how the height distribution in figure 2(A) is almost symmetric), which is consistent with a small contribution of the nonlinearity  $|\nabla h|^2$ , that is, the only term breaking the up–down symmetry of the surface. Neglecting this term, a characteristic length scale can be identified in equation (1) that, prior to non-dimensionalization, is given by

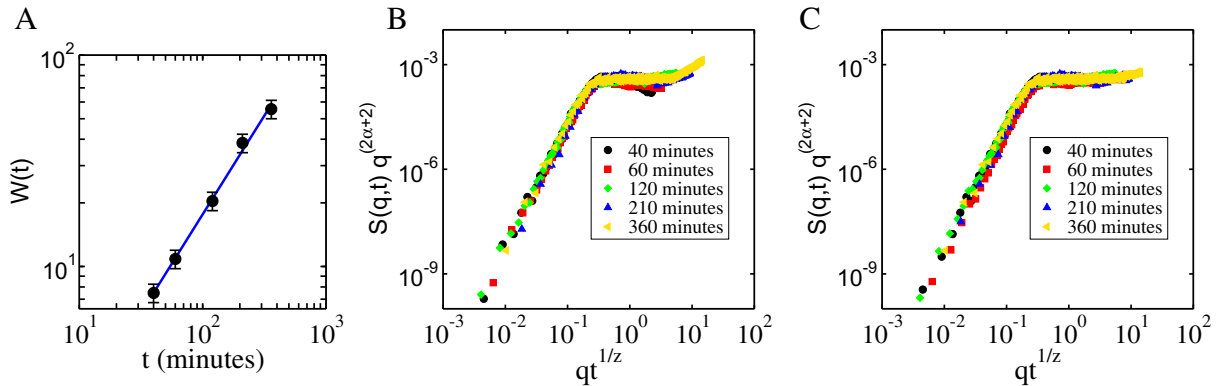
$$l_c = 2\pi \sqrt{\frac{3Dd_0}{V}}. \quad (9)$$

Hence, the ratio between  $l_c$  and the lateral system size  $L_x$  in numerical simulations of equation (1) must agree with the ratio between the experimental value  $l_c = 28$  nm and the experimental AFM window,  $L_c = 1$   $\mu$ m. Thus, we obtain approximately  $L_x \simeq 512$  in our dimensionless units (we have rounded this value up to an exact power of 2 in order to optimize the numerical integration of the equation by means of a pseudo-spectral algorithm).

The length scale  $l_c$  is the geometric average of the diffusion length (in the bulk),  $l_D = D/V$  and the capillarity length. Physically, this average arises from the competition between the scales *explored* by the diffusing particles in the gas and the length scales at which they can travel on the surface until they either aggregate or evaporate. In practice,  $l_c$  can be interpreted as the typical size of the cauliflower-like structures that can be identified in the surface morphology at short times; see figure 1(A).

Numerical simulations of equation (1) using the same scheme as in [8] are shown in figures 1(D)–(F) for the same set of times as for the experimental images that appear in the same figure. The time evolution of the surface consists of an initial regime controlled





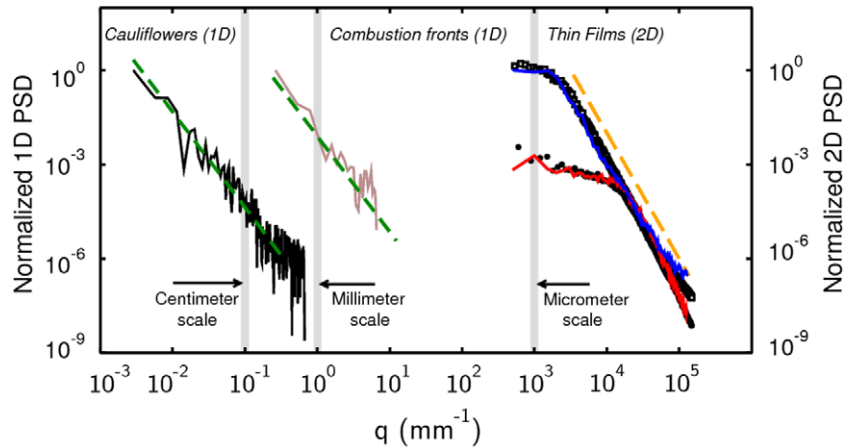
**Figure 3.** (A) Experimental global width or roughness,  $W(t)$  (solid circles). The blue solid line has slope  $\beta = 0.93 \pm 0.07$ . (B) Collapse of the radially averaged PSD for times from  $t = 40$  min to 6 h (see the legend) obtained for  $\alpha = 1.03$  and  $z = \alpha/\beta$ , with  $\beta$  as obtained from  $W(t)$ . (C) The same as panel (B) but for the theoretical model.

by the Mullins–Sekerka linear instability [20] that leads to the appearance of a pattern (cusp) with characteristic length scale  $l_c$ . In a process that is reminiscent of the stochastic Michelson–Sivashinsky equation that describes combustion fronts (see [21] and references therein), there is competition between cusp coarsening/annihilation and cusp formation induced by noise, leading to fully nonlinear dynamics. As a result, for long enough times, unstable growth is stabilized by the quadratic Kardar–Parisi–Zhang (KPZ) nonlinearity [21], the surface morphology becoming disordered and rough, with height fluctuations that are scale-free both in time and in space [7]. Note the strong resemblance between the theoretical and experimental morphologies shown in figure 1.

We have made a more quantitative comparison between equation (1) and experimental surfaces. In particular, we have determined the distribution of heights (figure 2), the height power spectral density (PSD; see figures 3 and 4),  $S(q, t)$ , defined as  $S(q, t) = \langle h_q(t)h_{-q}(t) \rangle$ , where the brackets denote average over noise realizations and the global width or roughness,  $W(t)$  (figure 3), defined as the standard deviation of the interface height around its mean.

The distribution of heights for short and long times is shown in figure 2 corresponding to the morphologies shown in figures 1(A), (C), (D) and (F). The distributions are very noisy but, overall, the shape of the curves is comparable for both experiments and theory. As mentioned above, for short times ( $t = 40$  min) the system is in the linear regime and one can neglect the role of the nonlinearity. As a result, all the terms preserve the symmetry  $h \rightarrow -h$  and the distributions are symmetric. On the other hand, for long times larger slopes develop as a result of the initial exponential growth and the nonlinear term breaks that symmetry. This can be easily seen in figure 2(B).

As discussed in the introduction, cauliflower-like fronts are characterized by scale invariance, which can be quantified with the PSD. For the time scales of figure 1, the PSD reflects the scale invariance associated with kinetic roughening (self-affine interfaces), and is expected to behave as  $S(q) \sim q^{-(2\alpha+d)}$  [22]. Here,  $\alpha$  is the so-called roughness exponent and  $d = 2$  is the substrate dimension. Besides, the roughness grows as a power law of time  $W(t) \sim t^{\alpha/z}$ , where  $z$  is the so-called dynamic exponent that measures the speed at which



**Figure 4.** Scaling universality of cauliflower surface growth. Normalized PSD functions are shown to compare systems spanning several orders of magnitude in size. Relevant scales are indicated with arrows. The label ‘Thin Films’ identifies the comparison between the experimental and theoretical (angular average of the) PSD for thin films grown by CVD. Circles: experiment  $t = 40$  min. Solid red line: theory  $t = 40$  min. Squares: experiment  $t = 6$  h. Dashed blue line: theory  $t = 6$  h. The orange dashed straight line is a guide to the eye with slope  $-4$  as predicted by equation (1). The solid black line under the label ‘Cauliflowers’ has been obtained after averaging the results obtained for ten cauliflower slices (*Brassica oleracea*, from two different specimens). The solid brown line under ‘Combustion fronts’ corresponds to the PSD of an experimental combustion profile [24]. The green dashed lines have slopes  $-3$ . This value differs from the  $-4$  obtained for the thin films case because we are computing the PSD of 1D slices in the cases of the cauliflowers and combustion fronts.

height correlations spread laterally across the interface [22]. It is customary to define a third roughness exponent,  $\beta$ , that is related to the previous ones through  $\beta = \alpha/z$ . For each curve  $S(q, t)$  in figure 4, the small  $q$  behavior corresponds to an uncorrelated interface, the crossover to correlated spectra moving to smaller  $q$  (larger length scales) as time proceeds. In our case, we obtain numerically  $\alpha = 1.03 \pm 0.06$  and  $\beta = 0.93 \pm 0.07$ , which are equal, within error bars, to the values  $\alpha = \beta = z = 1$  predicted by renormalization group (RG) calculations on equation (1) [20, 23]. In order to obtain these exponent values, we have computed the roughness using the relation

$$W^2(t) = \int S(\mathbf{q}, t) d\mathbf{q} = \int 2\pi q S(q, t) dq, \quad (10)$$

where  $S(q, t)$  is the radially averaged PSD (note that the argument here is  $q = |\mathbf{q}|$ ). Hereafter, we will refer to this radially averaged function simply as two-dimensional (2D) PSD.

In figure 3(A), we show the experimental time evolution of the surface roughness. As shown, the value obtained for the growth exponent  $\beta = 0.93 \pm 0.07$  is close to the theoretical prediction  $\beta = 1$ . A customary method to determine the roughness exponents is by means of the collapse of the PSDs at different times, by properly scaling  $S(\mathbf{q}, t)$  and  $q$  as shown in figures 3(B) (experiments) and 3(C) (theory).

The quantitative agreement we obtain between the experimental and theoretical PSD functions is not limited to the values of the scaling exponents. Remarkably, it actually extends to the behavior of the full functions along the dynamics of the system, as can be seen in figure 4, where we compare the theoretical and experimental PSDs for short and long times. Such a type of agreement goes much beyond what is usually expected in the context of universal properties [22].

#### 4. Universality of cauliflower-like fronts

So far, we have used the term *cauliflower* in a loose way. In order to justify this usage, it is convenient to identify the main universal phenomena and morphological properties that occur during the emergence of cauliflower-like structures in other contexts, and compare them with those assessed in the previous section. For instance, in the case of the familiar plants, one can postulate (i) an interaction among the *branches* that sustain the external surface. This interplay would induce *competitive growth* among different plant features; moreover, (ii) *mass is non conserved* and (iii) *fluctuations* are intrinsic to the underlying biological processes taking place both at the level of the cell metabolism and in the interaction with the environment. (iv) An extra stabilizing ingredient is necessary in order to guarantee the dynamical stability of the ensuing surface (whose specific form, as we argue below, does not change the statistical properties of that surface). In line with the occurrence of universality in the properties of rough surfaces evolving far from equilibrium [22], for appropriate cases the argument can be reversed. Thus, when comparing two different systems, the same statistical properties of the surface are a manifestation of the same governing general principles, in spite of the fact that the detailed physical mechanisms controlling the dynamics of, e.g., aggregating species in CVD and plant cells are quite different indeed.

This property is a generalization of what happens in the proximity of a critical point within the framework of critical phenomena in equilibrium systems. Thus, while the microscopic details are different, the character of the interactions (in our case imposed by non-local competition or non-conservation) dictates the dynamics. For instance, in the case of cauliflowers, non-locality is caused by branch competition. In the case of CVD, it stems from the fact that the diffusing particles access with a higher probability the most exposed parts of the surface. Finally, in the case of combustion, the parts of the front that lie behind the average have less access to oxygen and other combustion species.

The basic ingredients expected for cauliflower-like surface growth, (i) through (iii) above, should reach a non-trivial balance resulting generically in a morphology that, albeit disordered, presents a self-similar, hierarchical structure. Moreover, one expects a typical characteristic length scale to arise at the finest observation scale, due to the competition between stable and unstable growth mechanisms, as generically occurs in pattern forming systems [21].

Schematically,

$$\begin{array}{c}
 \boxed{\text{Variation of height}} = \boxed{\text{Non-locality (competition)}} + \boxed{\text{Stabilizing mechanism (short scale)}} \\
 + \boxed{\text{Non-conservation (non-linearity)}} + \boxed{\text{Fluctuations (noise)}}
 \end{array} \quad (11)$$

If we were to formulate a general interface equation that incorporates these mechanisms, actually arguments exist that can impose restrictions on its possible mathematical form. First, we assume that such an equation is weakly nonlinear, in the sense that it is a polynomial in small powers of the height and its derivatives. This is a standard simplification in the study both of scale-invariant spatially extended systems [25] and of pattern forming systems [21] in the long-wavelength limit close to instability threshold, although see [26] and below. Next, self-similarity requires system statistics to remain unchanged under amplification of the lateral length scale of the sample by a factor  $b$ , while rescaling the surface height by the same factor,  $\langle h(b\mathbf{r}) \rangle = \langle bh(\mathbf{r}) \rangle$ , where  $\langle \cdot \rangle$  means *in a statistical sense*. For instance, in the case of cauliflower plants, one would expect the exposed surface to arise as an envelope for an underlying branched structure. This branching structure provides *volume-filling* mechanisms that guarantee an efficient distribution of energy and nutrients.

Moving further, the dominant *linear* term in the sought-for equation of motion can be inferred with large generality through dimensional analysis. Thus, assuming that there is a single velocity scale,  $V$ , involved in the surface growth, the (linear) rate of amplification,  $\omega_\lambda$ , of a fluctuation can be related to the typical length scale of the perturbation,  $\lambda$ , as

$$\omega_\lambda \lambda V^{-1} = \text{dimensionless constant} \Rightarrow \omega_q \sim Vq. \quad (12)$$

This expression is traditionally referred to as a dispersion relation, and is often written in terms of the wavenumber  $q \equiv |\mathbf{q}| = 2\pi\lambda^{-1}$ . Actually, equation (12) ensues for the celebrated diffusion-limited aggregation model (DLA) that is the paradigm of fractal growth [27], and contains the signatures of unstable growth and non-local branch competition. In addition, further stabilizing mechanisms contribute to equation (12) as higher powers of  $q$ . Physical examples of non-local growth include solidification from a melt [28], flame fronts [29], stratified fluids [30], thin film evolution due to crystalline stress [31], viscous fluid fingering [32], growing biomorphs [33] or geological structures [34], to cite a few.

The final ingredient for the height equation of motion is *nonlinearity*. The natural choice is the KPZ term  $(V/2)(\nabla h)^2$ , which has been argued to be generically present in the continuum description of surfaces that grow irreversibly in the absence of conservation laws [35] and has been recently assessed to a high degree of accuracy in 1D experiments [36]. Likewise, the simplest expression of fluctuations is through a random (uncorrelated) function of space and time-like Gaussian-distributed white noise  $\eta(\mathbf{r}, t)$ .

Combining all these general ingredients together, we can write down the evolution equation for the *local* surface velocity, which in view of equation (12) takes a particularly simple form when written for the Fourier modes of the height and noise fields, namely

$$\partial_t h_{\mathbf{q}} = \left[ Vq + \sum_{j=2}^4 C_j q^j \right] h_{\mathbf{q}} + \frac{V}{2} \mathcal{F}\{(\nabla h)^2\}_{\mathbf{q}} + \eta_{\mathbf{q}}, \quad (13)$$

where  $C_j$  are negative constants that depend on the specific stabilizing physical conditions. Note that equation (1) simply corresponds to the particular case of equation (13) in which  $C_2 = C_4 = 0$ . An important result is that the same values of the scaling exponents  $\alpha = z = 1$  occur for any stabilizing linear mechanism of the form  $C_j q^j$  with  $j \geq 2$ , as indicated by RG analysis [20]. Consequently, we are confident that this scaling behavior can also be identified in other systems for which the stabilizing term may have different non-zero contributions  $C_j$ . For instance, combustion fronts [29] and stratified fluids [30] correspond to  $C_2 \neq 0$  and  $C_3 = 0$ , and one again finds that  $\alpha = z = 1$ .

In practical terms, all the terms in the main equation cooperate to produce those self-similar structures. Thus, if we replace the term  $Vq$  with, for instance,  $vq^2$ , then one would have obtained the celebrated Kuramoto–Sivashinsky equation. Alternatively, if one suppresses the nonlinear term  $\frac{V}{2}[\mathcal{F}(\nabla h)^2]$ , then the numerical integration will explode as the surface roughness would increase exponentially without control.

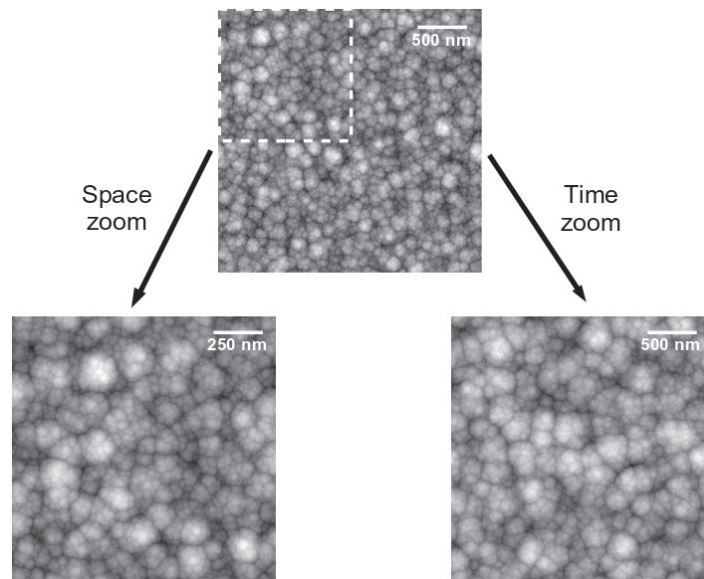
As an example, in figure 4 we also show the PSD of the profile of an expanding spherical flame (the experimental profile was taken from [24]), showing good agreement with the predictions of equation (13). Additionally, we have made statistical measurements of the outermost surfaces of cauliflower plants. Specifically, we have computed the PSD of the interface profiles of several slices from specimens of *B. oleracea*. The roughness exponent  $\alpha$  can be determined by analyzing the PSD of these slices. In figure 4, we also show the averaged PSD over ten different slices. The slope for small values of  $q$  leads to the value  $\alpha = 1.02 \pm 0.05$  that, within experimental uncertainty [37], is the same as that provided by our continuum description. Overall, figure 4 proves the validity of the generalized equation (13) for describing cauliflower-like fronts across seven orders of magnitude in length scales, finally justifying the use of the term ‘cauliflower’ as applied to morphologies that can differ quite strongly from the familiar plants. The difference between these and CVD films or combustion fronts is that, for the former, we have not been able to obtain a dynamical characterization of the plant morphology (we have characterized it only at a fixed, long time), as opposed to the latter in which the full dynamical equation, equation (13), has been derived from first principles and has also been experimentally validated, both in the context of CVD (this work) and for combustion fronts, see [38].

To understand better the significance of the unit values found for both critical exponents  $\alpha$  and  $z$ , note that for kinetically rough, *self-affine* surfaces,  $W/L \sim L^{\alpha-1}$  for a sufficiently large lateral observation scale,  $L$  [22]. Precisely for  $\alpha = 1$ , the system is not merely self-affine but rather becomes *self-similar*, its geometrical features remaining statistically invariant in the macroscopic limit  $L \rightarrow \infty$ . Note, moreover, that in this case the average growth velocity for equation (13) is only due to the nonlinear term and becomes scale independent precisely for  $\alpha = 1$ , showing the self-consistency of our initial assumption on a single velocity scale. Also the fact that  $z = 1$  reflects another peculiar fact about the fractality of the system: the system is self-similar also in time. Namely, correlations travel ballistically across the surface so that time behaves as space under rescaling. Hence, if we observe the system at two different times, we cannot distinguish the second one from an isotropic spatial zoom performed in the earlier one, as illustrated in figure 5. This corresponds to the intuition that by mere visual inspection it is hard to distinguish between the whole cauliflower plant and a piece of it, and between young and small florets. Therefore, in spite of the lack of dynamical information about cauliflower plant growth, the fact that self-similarity in time constrains the value of  $z$  to be unity, and the confirmation of  $\alpha \simeq 1$  from figure 3, both give us confidence to suggest that the growth of cauliflower plants obeys the same general principles as CVD growth.

## 5. Conclusions

To conclude, we have shown that equation (1) provides an accurate description of unstable thin-film growth by CVD, agreeing with experiments both qualitatively and quantitatively. To our knowledge, this is the first time that such a quantitative agreement between theory and experiment has been achieved that goes beyond values of critical exponents, reaching the full dynamical behavior of observables such as the PSD. Actually, the moving boundary problem





**Figure 5.** Fractality in space and time reflects the inability to distinguish between image zooms and time shifts. This is the hallmark of cauliflower-like surface growth as described by equation (13). Top: numerical simulation for  $t_1 = 2$  h. Bottom right: numerical simulation for  $t_2 = 4$  h. Bottom left: spatial amplification of the top panel by a factor  $t_2/t_1 = 2$ . The zoomed area is indicated in the top panel with a white dashed square.

leading to equation (1) has quite a generic form that is relevant to a number of processes in which transport is diffusive, such as solidification from a melt or electrochemical deposition (see references e.g. in [21]), so that similar quantitative descriptions of different growth systems by equation (1) can be foreseen. Beyond that, we have also seen that a similar scaling behavior characterized by scaling exponents  $\alpha = z = 1$  can be, moreover, described by equation (13) that applies to other systems that differ in the (linear) relaxation mechanisms.

We would like to emphasize some important points concerning the implications of equation (13). It is intriguing that the geometrical properties of cauliflower-like structures are at the boundary between disorder and fractality, between self-affinity and self-similarity. Thus, the values  $\alpha = z = 1$  of the scaling exponents induce an interface which is disordered at all scales, while allowing at the same time for the identification of a ‘typical’ texture or motif. RG calculations and numerical simulations [21, 23] both indicate the robustness of these exponent values, suggesting the universality of equation (13) as a description of a large class of non-equilibrium systems. Note, however, that interfaces developed under the same general physical principles as elucidated here, but for which the evolution equation is strongly, rather than weakly, nonlinear, may feature different morphological properties from the present cauliflower type. Examples are known in the dynamics of thin [39] and epitaxial films, and are reviewed in [26].

One of the reasons why fractals are so popular is the promise that, knowing their generating rules, we can infer the *character* of the underlying physical or biological mechanisms. Hence, whether the interactions are non-local versus local, non-conserved versus conserved, self-similar versus self-affine, etc dictates the form of the mathematical equations. In contrast to

‘algorithmic’ descriptions of fractals, the virtue of our continuum dynamical formulation is that it allows us to extract which are the most relevant mechanisms [40] whose interplay gives rise to these appealing structures, namely non-locality, non-conservation and noise. Among all the possible mathematical forms of non-locality, self-similarity enforces  $\alpha = 1$ . This conclusion is expected to guide the inference of the relevant mechanisms at play in specific physical or biological systems where cauliflower-like structures are identified. Moreover, it is remarkable that such a simple equation as equation (13) can be able to capture this non-trivial dynamics, to the extent that, by means of pseudo-spectral numerical integration, the system is capable of efficiently producing realistic patterns that resemble turbulent flame fronts or the texture of cauliflower plants.

From a more general point of view, our theory also brings up the long-standing question as to why natural evolution favors self-similar structures. The so-called allometric scaling relations [41] explain (and predict) the *branching* structure of living bodies. The central idea behind these theories is that biological time scales are limited by the rates at which energy can be spread to the places where it is exchanged with the tissues. Thus, the *space-filling* structure [42] required to supply matter and energy to a living system can be accounted for. Focusing on more specific systems (cauliflower plants, etc), albeit with a large degree of universality, our work suggests the self-similar features that the ‘canopy’ atop such branched structures may have.

## Acknowledgments

This work was partially supported by grant numbers FIS2009-12964-C05-01, -03 and -04 (MICINN, Spain). JGB acknowledges the Executive Research Agency of the European Union for funding under Marie Curie IEF grant number 272448.

## References

- [1] Hitchman L M and Jensen F K (ed) 1993 *Chemical Vapor Deposition: Principles and Applications* (New York: Academic)
- [2] Messier R and Yehoda J E 1985 *J. Appl. Phys.* **58** 3739
- [3] van Dyke M 1982 *An Album of Fluid Motion* (Stanford: Parabolic Press)
- [4] Bales G S *et al* 1990 *Science* **249** 264
- [5] Mandelbrot B B 1982 *The Fractal Geometry of Nature* (San Francisco: Freeman)
- [6] Barnsley M F 1993 *Fractals Everywhere* (San Diego, CA: Academic)
- [7] Cuerno R and Castro M 2001 *Phys. Rev. Lett.* **87** 236103
- [8] Nicoli M, Castro M and Cuerno R 2008 *Phys. Rev. E* **78** 021601
- [9] Nicoli M, Castro M and Cuerno R 2009 *J. Stat. Mech.: Theory Exp.* **2009** P02036
- [10] Samko S G, Kilbas A A and Marichev O I 2002 *Fractional Integrals and Derivatives* (London: Taylor and Francis)
- [11] Kassner K, Misbah C and Debierre J-M 2005 *J. Cryst. Growth* **275** e183
- [12] Silvestre L 2007 *Commun. Pure Appl. Math.* **60** 0067
- [13] Bychkov V V and Liberman M A 2000 *Phys. Rep.* **325** 115
- [14] Castro M, Cuerno R A, Sánchez A and Domínguez-Adame F 1998 *Phys. Rev. E* **57** 2491
- [15] Kim I, Hong S, Consoli A, Benedikt J and von Keudell A 2006 *J. Appl. Phys.* **100** 053302
- [16] Neyts E and Bogaerts A 2006 *Phys. Chem. Chem. Phys.* **8** 2066
- [17] Hopf C, Letourneur K, Jacob W, Schwarz-Selinger T and von Keudell A 1999 *Appl. Phys. Lett.* **74** 3800
- [18] Maya P N, von Toussaint U and Hopf C 2008 *New J. Phys.* **10** 023002



- [19] Palmer B J and Gordon R G 1988 *Thin Solid Films* **158** 313
- [20] Cross M and Greenside H 2009 *Pattern Formation and Dynamics in Nonequilibrium Systems* (Cambridge: Cambridge University Press)
- [21] Nicoli M, Cuerno R and Castro M 2009 *Phys. Rev. Lett.* **102** 256102
- [22] Barabási A-L and Stanley H E 1995 *Fractal Concepts in Surface Growth* (Cambridge: Cambridge University Press)
- [23] Nicoli M, Cuerno R and Castro M 2011 *J. Stat. Mech.: Theory Exp.* **2011** P10030
- [24] Law C, Jomaas G and Bechtold J 2005 *Proc. Combust. Inst.* **30** 159
- [25] Kardar M 2007 *Statistical Physics of Fields* (Cambridge: Cambridge University Press)
- [26] Misbah C, Pierre-Louis O and Saito Y 2010 *Rev. Mod. Phys.* **82** 981
- [27] Witten T and Sander L 1983 *Phys. Rev. B* **27** 5686
- [28] Langer J S 1980 *Rev. Mod. Phys.* **52** 1
- [29] Michelson D M and Sivashinsky G I 1977 *Acta Astronaut.* **4** 1207
- [30] Ostrovsky L A, Stepanyants Y A and Tsimring L S 1983 *Int. J. Non-Linear Mech.* **19** 151
- [31] Shchukin V A and Bimberg D 1999 *Rev. Mod. Phys.* **71** 1125
- [32] Kessler D A, Koplik J and Levine H 1988 *Adv. Phys.* **37** 255
- [33] Garcia-Ruiz J, Melero-Garcia E and Hyde S 2009 *Science* **323** 362
- [34] Misbah C, Renard F, Gratier J P and Kassner K 2004 *Geophys. Res. Lett.* **31** L06618
- [35] Kardar M, Parisi G and Zhang Y C 1986 *Phys. Rev. Lett.* **56** 889
- [36] Takeuchi K A, Sano M, Sasamoto T and Spohn H 2011 *Sci. Rep.* **1** 34
- [37] Kim S H 2005 *J. Korean Phys. Soc.* **46** 474
- [38] Searby G, Truffaut J-M and Joulin G 2001 *Phys. Fluids* **13** 3270
- [39] Kassner K and Misbah C 2002 *Phys. Rev. E* **66** 026102
- [40] Kadanoff L P 1986 *Phys. Today* **39** 6
- [41] West G, Brown J and Enquist B 1997 *Science* **276** 122
- [42] Murray J D 2007 *Mathematical Biology* 3rd edn (New York: Springer)